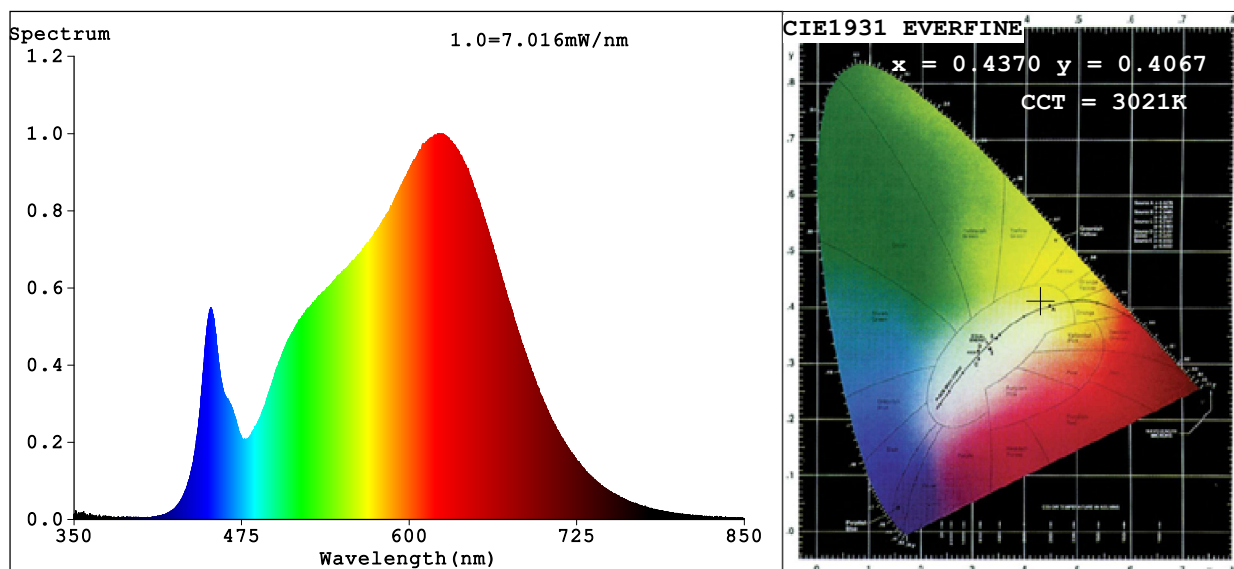


## Spectrum Test Report



### Color Parameters:

Chromaticity Coordinate:  $x=0.4370$   $y=0.4067$   $u'=0.2495$   $v'=0.5224$

CCT=3021K (Duv=0.0010) Dominant WL:Ld =582.4nm Purity=53.3%

Ratio:R=24.3% G=72.9% B=2.8%; Peak WL:Lp=622.7nm FWHM=165.0nm

Render Index:Ra=93.9 CRI=91.1 TM30:Rf=92 Rg=99

R1 =94 R2 =96 R3 =97 R4 =95 R5 =94 R6 =96 R7 =94

R8 =85 R9 =65 R10=91 R11=96 R12=80 R13=95 R14=98 R15=90

### Photo Parameters:

Flux = 348.6 lm Eff. : 42.68 lm/W Fe = 1.205 W

### Electrical parameters:

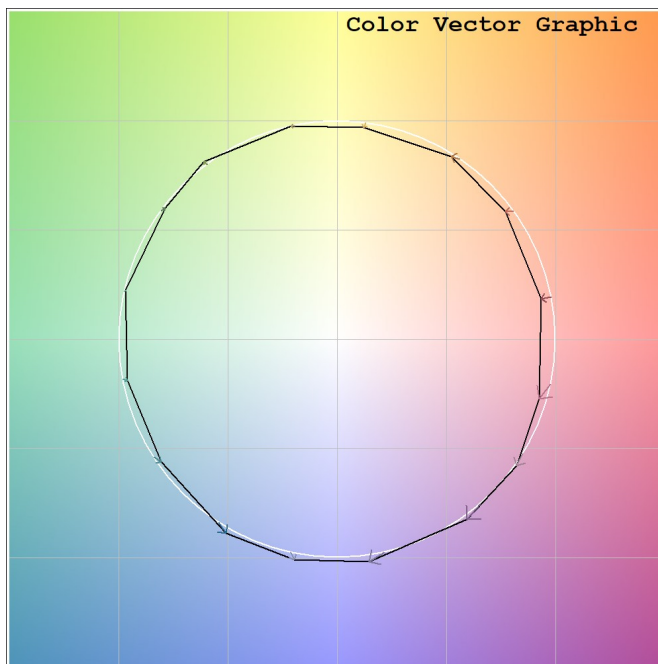
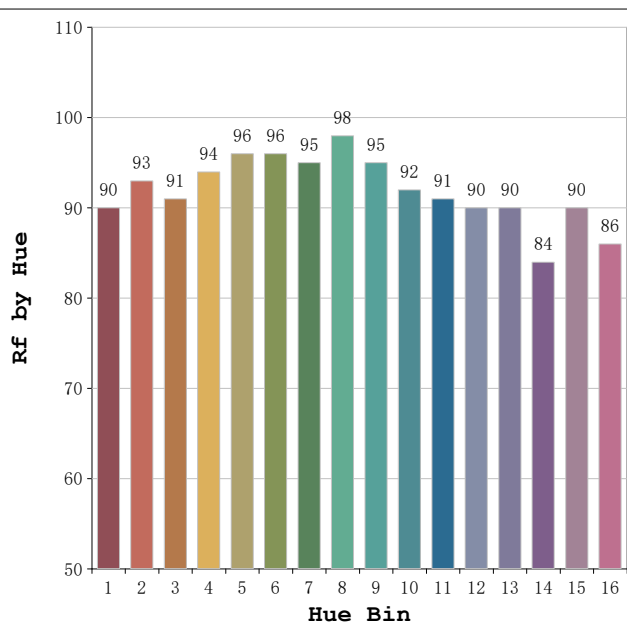
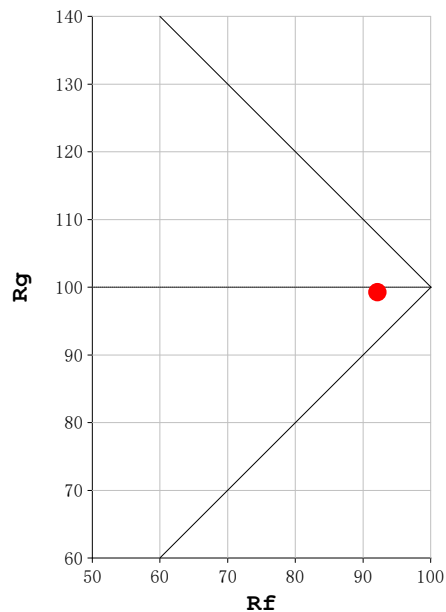
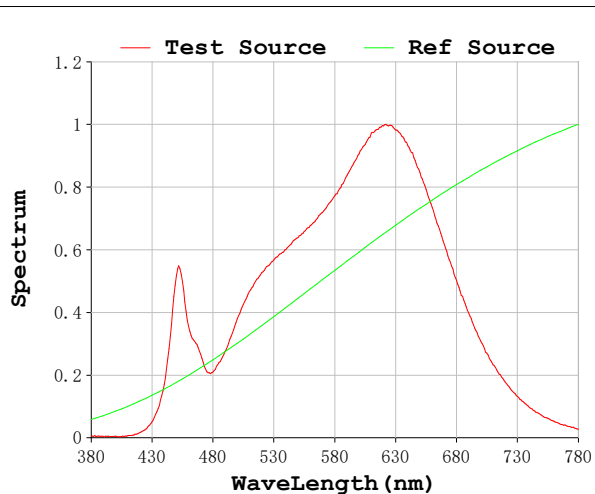
V = 230.08 V I = 0.03779 A P = 8.169 W PF = 0.9394

Status: Integral T = 4037 ms Ip = 49530 (76%)

Model:Focalis Axis 8 W  
Tester:Sergio Carneros  
Temperature:20Deg  
Manufacturer:Luz Negra

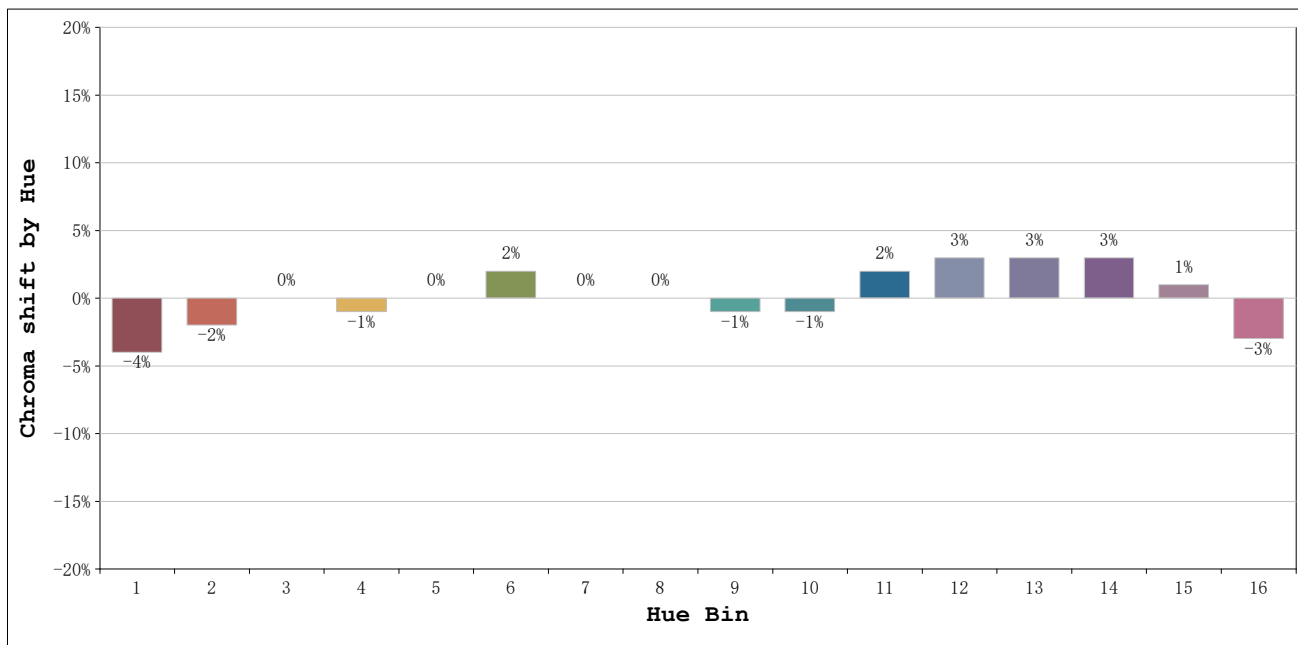
Number:3000K 22°  
Date:2026-03-20 12:48:26  
Humidity:50%  
Remarks:1 unidad ref.negro

**Rf: 92**      **CCT: 3021 K**      **u': 0.2495**  
**Rg: 99**      **Duv: 0.0010**      **v': 0.5224**



Model:Focalis Axis 8 W  
 Tester:Sergio Carneros  
 Temperature:20Deg  
 Manufacturer:Luz Negra

Number:3000K 22°  
 Date:2026-03-20 12:48:26  
 Humidity:50%  
 Remarks:1 unidad ref.negro



			Graphic shift(%)	
Hue Bin	Hue Angle	Rf	Chroma	Hue
1	0.0° - 22.5°	90	-4	0
2	22.5° - 45.0°	93	-2	2
3	45.0° - 67.5°	91	0	4
4	67.5° - 90.0°	94	-1	1
5	90.0° - 112.5°	96	0	2
6	112.5° - 135.0°	96	2	1
7	135.0° - 157.5°	95	0	-1
8	157.5° - 180.0°	98	0	0
9	180.0° - 202.5°	95	-1	1
10	202.5° - 225.0°	92	-1	4
11	225.0° - 247.5°	91	2	5
12	247.5° - 270.0°	90	3	2
13	270.0° - 292.5°	90	3	-7
14	292.5° - 315.0°	84	3	-8
15	315.0° - 337.5°	90	1	-5
16	337.5° - 360.0°	86	-3	-6

Model:Focalis Axis 8 W  
 Tester:Sergio Carneros  
 Temperature:20Deg  
 Manufacturer:Luz Negra

Number:3000K 22°  
 Date:2026-03-20 12:48:26  
 Humidity:50%  
 Remarks:1 unidad ref.negro